

# DTA 127

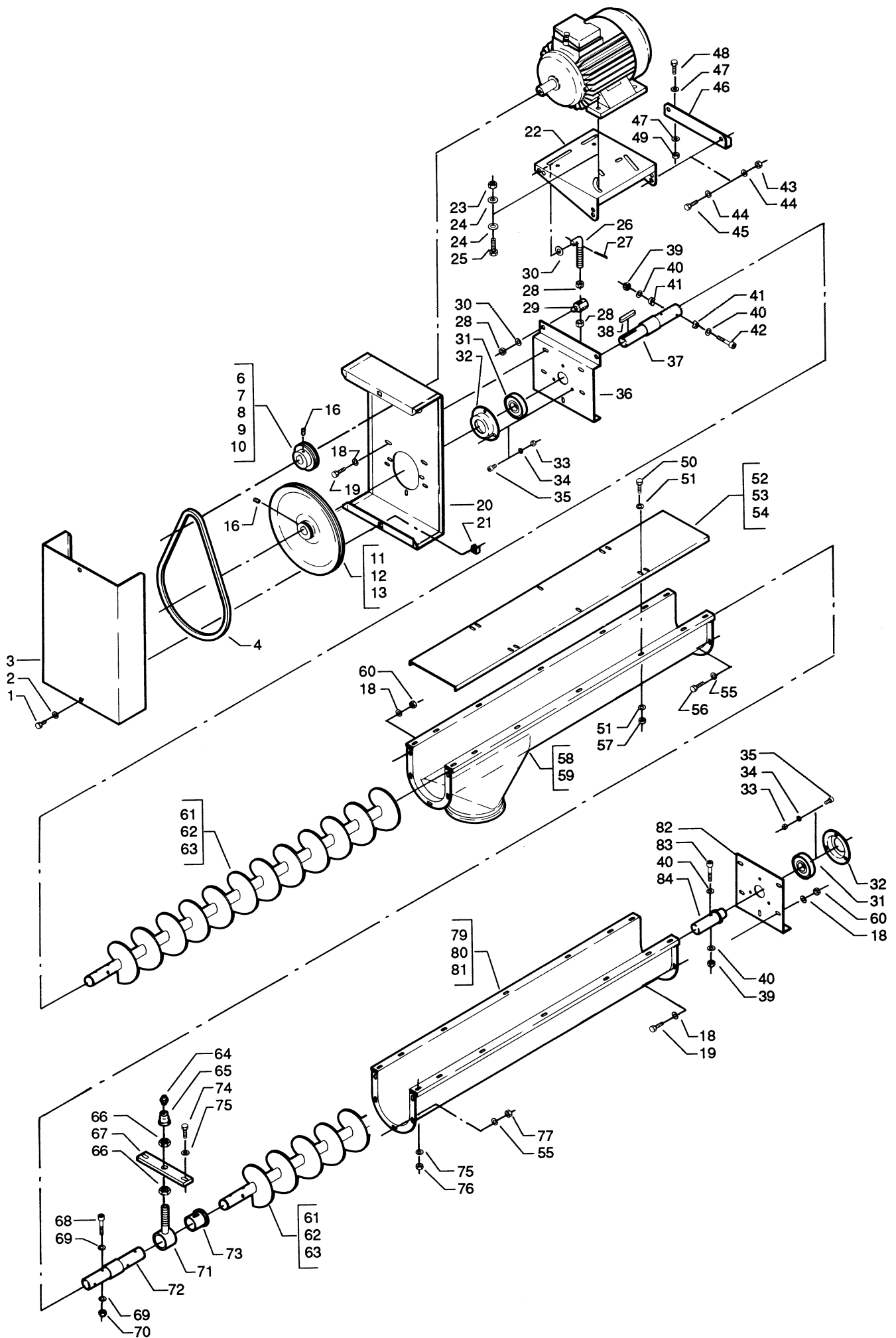


Fig.	Pack	Serial no.	Part no.	Pieces	Notes
1	H,J,K,L,M		100 306 014	2	Set screw st.8.8 M8 x 15 mm
2	H,J,K,L,M		100 331 005	2	Flat washer M8
3	H,J,K,L,M		171 601 335	1	Outside belt guard
4	H,J,K,L,M		100 403 079	1-3	V-belt A40
6	H		170 030 012	1	V-belt pulley SPA 63 with 1 groove, boring $\varnothing$ 19 mm
7	J		170 030 014	1	V-belt pulley SPA 63 with 1 groove, boring $\varnothing$ 24 mm
8	K		170 030 020	1	V-belt pulley SPA 63 with 2 grooves, boring $\varnothing$ 24 mm
9	L		170 030 022	1	V-belt pulley SPA 63 with 2 grooves, boring $\varnothing$ 28 mm
10	M		170 030 028	1	V-belt pulley SPA 63 with 3 grooves, boring $\varnothing$ 28 mm
11	H,J		170 030 133	1	V-belt pulley SPA 250 with 1 groove, boring $\varnothing$ 25mm
12	K,L		170 030 136	1	V-belt pulley SPA 250 with 2 grooves, boring $\varnothing$ 25 mm
13	M		170 030 139	1	V-belt pulley SPA 250 with 3 grooves, boring $\varnothing$ 25 mm
16	H,J,K,L,M		100 322 023	2	Stop screw M8 x 8 mm
18	C		100 331 004	20	Flat washer M6
19	C		100 323 041	10	Set screw st.8.8 M6 x 15 mm
20	H,J,K,L,M		171 601 334	1	Inside belt guard
21	H,J,K,L,M		100 323 303	2	Clips nut M8
22	C		171 001 301	1	Motor mounting plate
23	H,J,K,L,M		100 315 013	4	Nut st.8.8 M10
24	H,J,K,L,M		100 331 006	8	Flat washer M10
25	H,J,K,L,M		100 306 030	4	Set screw st.8.8 M10 x 30 mm
26	C		170 022 101	2	Stretching screw M10
27	C		100 333 076	2	Split pin $\varnothing$ 3.2 x 25 mm
28	C		100 315 013	6	Nut st.8.8 M10
29	C		170 022 100	2	Stud bolt M10
30	C		100 331 006	4	Flat washer M10
31	C		100 401 063	2	Ball bearing # 6305-2RS1
32	C		171 003 301	2	Bearing cover
33	C		100 315 012	6	Nut st.8.8 M8
34	C		100 332 019	6	Star washer M8
35	C		100 309 004	6	Hex-socket cap screw M8 x 16 mm
36	C		171 602 331	1	End plate
37	C		171 602 338	1	Shaft
38	C		100 405 013	1	Key 8 x 7 x 50 mm
39	C		100 316 003	3	Lock nut M8
40	C		100 331 005	6	Flat washer M8
41	C		100 331 074	4	Dished washer M8
42	C		100 309 009	2	Hex-socket cap screw M8 x 55 mm
43	C		100 315 013	2	Nut st.8.8 M10
44	C		100 331 006	4	Flat washer M10
45	C		100 306 029	2	Set screw st.8.8 M10 x 25 mm
46	C		171 602 301	1	Bracket for motor mounting plate
47	C		100 331 006	4	Flat washer M10
48	C		100 306 029	2	Set screw st.8.8 M10 x 25 mm
49	C		100 315 013	2	Nut st.8.8 M10
50	A,B,D,E,F		100 308 029	6	Set screw st.8.8 M8 x 12 mm
51	A,B,D,E,F		100 331 005	12	Flat washer M8
52	A,D		171 621 308	1	Cover, 1 m
53	E		171 621 307	1	Cover, 1.5 m
54	B,F		171 621 306	1	Cover, 2 m
55	A,B,D,E,F		100 331 004	10	Flat washer M6
56	A,B,D,E,F		100 323 041	5	Set screw st.8.8 M6 x 16 mm
57	A,B,D,E,F		100 315 012	6	Nut st.8.8 M8
58	A		171 602 118	1	Trough with outlet, 1 m
59	B		171 602 116	1	Trough with outlet, 2 m
60			100 315 028	10	Nut st.8.8 M6
61	A,D		171 602 335	1	Flight, 1 m
62	E		171 602 334	1	Flight, 1.5 m
63	B,F		171 602 333	1	Flight, 2 m
64			100 421 005	1	Grease nipple 1/4" WRG
65	G		100 316 071	1	Socket
66			100 316 069	2	Counter nut 3/8" WRG
67	G		171 602 314	1	Crossbar
68	G		100 309 007	4	Hex-socket cap screw M8 x 45 mm
69	G		100 331 005	8	Flat washer M8
70	G		100 316 003	4	Lock nut M8
71	G		171 602 340	1	Bearing housing
CPL	G		171 602 109	1	Fig. 71 + 72 + 73. Repair kit for intermidiete bearing
74	G		100 306 015	2	Set screw st.8.8 M8 x 20 mm
75	G		100 331 005	4	Flat washer M8
76	G		100 315 012	2	Nut st.8.8 M8
77	A,B,D,E,F		100 315 028	5	Nut st.8.8 M6
79	D		171 602 124	1	Trough without outlet, 1m
80	E		171 602 123	1	Trough without outlet, 1.5m
81	F		171 602 122	1	Trough without outlet, 2m
82	C		171 602 332	1	End plate
83	C		100 309 007	1	Hex-socket cap screw M8 x 45 mm
84	C		171 602 337	1	Shaft